

LETALIŠČE / AIRPORT

AJDOVŠČINA (LJAJ)

NASLOV / ADDRESS

AEROKLUB 'JOSIP KRIŽAJ', GORIŠKA CESTA 50, 5270 AJDOVŠČINA, SLOVENIJA

INFO

tel: **00386 (0) 53689192**

fax: 065-169-193, (+35-169-193)



UL

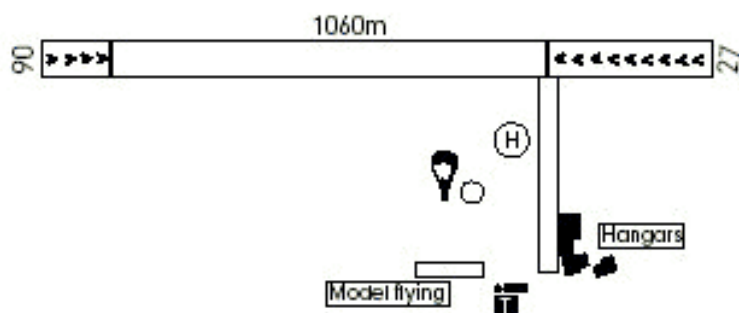
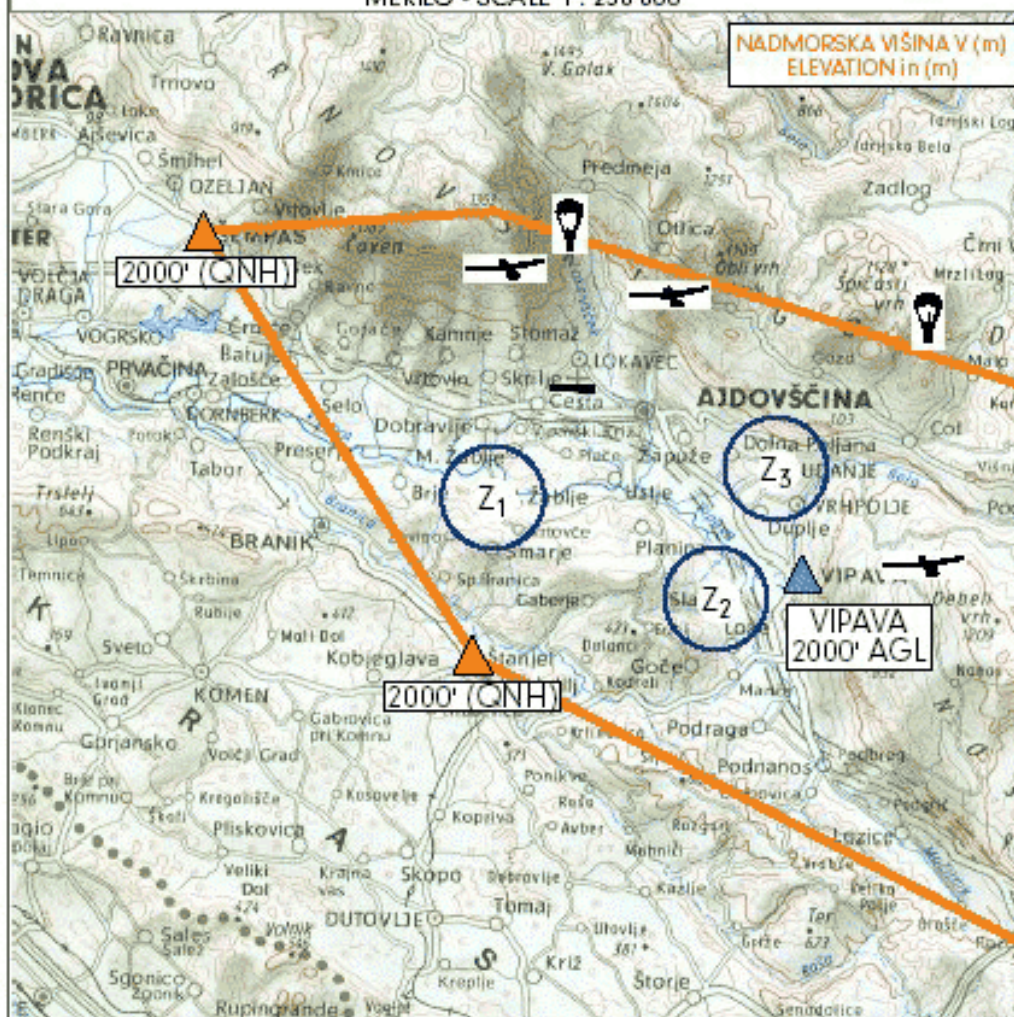
SLOVENSKA LETALIŠČA

PODATKI SO INFORMATIVNI IN NEURADNI
DATA IS INFORMATIVE AND UNOFFICIAL

Letališče je namenjeno za športna in turistična letala (skupne mase do 5000 kg). Letala iz tujine morajo najprej pristati na enem od mednarodnih letališč in po carinjenju z najavo in dovoljenjem nadaljujejo let proti AJDOVŠČINI.

Adpermitted for sport and turist ACFT only (weight up to 5000 kg). Pilots flying to LJ AJ are obliged to land first at an international AD for customs and permission before they continue the flight to AJDOVŠČINA.

MEROLO - SCALE 1 : 250 000



NI V MERILU - NOT TO SCALE

POZICIJA POSITION	45° 53' 12.90" N 013° 53' 30.26" E
----------------------	---------------------------------------

VPS RWY	093° - 272°
------------	-------------

MERE VPS DIMENSION	1060 X 50 m
-----------------------	-------------

*TODA	1060 m
-------	--------

*LDA	09 1060 m 27 900 m
------	-----------------------

POVRŠINA SURFACE	Trava Grass
---------------------	----------------

NADM.VIŠINA ELEVATION	117 m 384 ft
--------------------------	-----------------

FREKVENCA FREQUENCY (AFIS)	123,500 MHz
----------------------------------	-------------

NAJAVA REGISTRATION	FIO LJAJ 00386 (0) 420 61 609
------------------------	-------------------------------------

METEO	LJJ 00386 (0) 420 61 619
-------	--------------------------------

LUČI LIGHTS	-
----------------	---

▲ TOČKE JAVLJANJA
REPORTING POINTS

ROMEO 45° 45' 30" N 14° 02' 56" E	Vas RAZDRTO Village
---	---------------------------

VIPAVA 45° 51' 00" N 13° 57' 54" E	Mesto VIPAVA City
--	-------------------------

▲ LOKALNE TOČKE JAVLJANJA
LOCAL REPORTING POINTS

PODKRAJ 45° 51' 58" N 14° 03' 46" E	Vas PODKRAJ Village
---	---------------------------

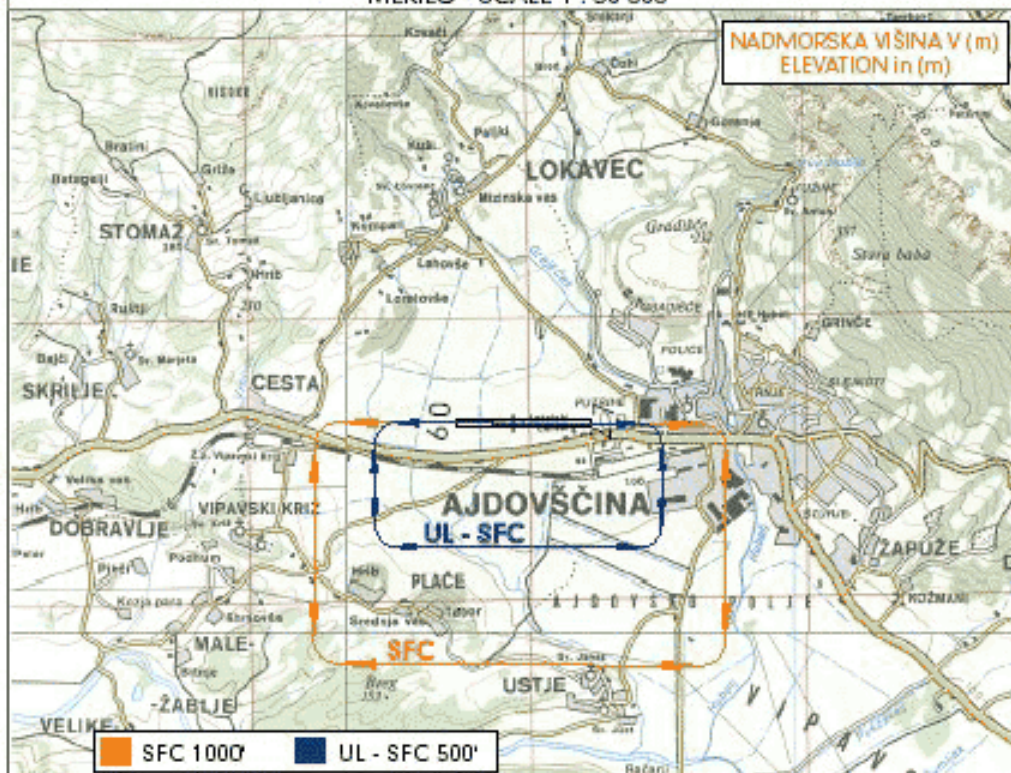
ŠEMPRAS 45° 55' 48" N 13° 45' 00" E	Vas ŠEMPRAS Village
---	---------------------------

ŠTANJEL 45° 49' 28" N 13° 50' 55" E	Vas ŠTANJEL Village
---	---------------------------

ŠOLSKI KROG - AERODROME TRAFFIC CIRCUIT

PODATKI SO INFORMATIVNI IN NEURADNI
DATA IS INFORMATIVE AND UNOFFICIAL

MERILO - SCALE 1 : 50 000



OVIRE:

-Pred pragom 27 bodite pozorni na industrijske objekte.
-Izogibajte se mesta AJDOVŠČINA.

OBSTACLES:

-Before THR 27 pay attention to the industrial buildings.
-Avoid the city of AJDOVŠČINA.

POZOR:

-Severno od letališča se nahajajo planine od višine 4500 ft.

ATTENTION:

-High terrain up to 4500 ft N of AD.

GORIVO FUEL	100 LL	MAZIVO OIL	AEROSHELL W 100, W 80
----------------	--------	---------------	-----------------------

SERVIS:
Popravila in pregledi: C-150, C-127, C-177, PA-18, PA-28, PA-38, Z-526, Z-527 in vse vrste jadralnih letal.

SERVICE:
Repairs and inspections: C-150, C-127, C-177, PA-18, PA-28, PA-38, Z-526, Z-527 and gliders.

HOTELI:
AJDOVŠČINA (1,5km), NOVA GORICA (25km). Privatne sobe. Možno kampiranje na letališču.

HOTELS:
AJDOVŠČINA (1,5km), NOVA GORICA (25km). Tourist rooms. Camp on AD.

DELOVNI ČAS:
01.APRIL - 31.OKTOBER OD 08.00 - 18.00 LT

HOURS:
01.APR - 31.OCT 08.00 - 18.00 LT

BELEŽKE/NOTICE: -